




Product lineup

ProductName	MT-1 Ordinary mud responsive type 	MT-2 Cement mud & Ordinary mud responsive type 	MT-3 Sea mud responsive type 
Characteristics	White powder	Gray powder	Gray powder
Packing style	Polyethylene pack 15kg (33lb)	Polyethylene pack 15kg (33lb)	Polyethylene pack 18kg (39,7lb)
Addition amount	2~8kg/m ³ 1,7~8,4lb/cu.yd	1~5kg/m ³ 3,4~13,5lb/cu.yd	1~5kg/m ³ 3,4~13,5lb/cu.yd
Features	<ul style="list-style-type: none"> ○This product absorbs water in mud, and changes the mud into better dry characteristics. ○Since reaction occurs as soon as this product sticks to mud, improvement is possible even by light blending only. 	<ul style="list-style-type: none"> ○This product absorbs water in mud to increase stickiness of the mud, and improves the mud to have dry characteristics. ○Since this product is effective by mixing dissolved components with soil particles, sufficient mixture is required. ○Since this product is applied by dust-control treatment, dust scattering will be reduced even at a windy site. 	<ul style="list-style-type: none"> ○This product absorbs water in mud to increase stickiness of the mud, and improves the mud to have dry characteristics. ○Since this product is effective by mixing dissolved components with soil particles, sufficient mixture is required. ○Since this product is applied by dust-control treatment, dust scattering will be reduced even at a windy site. ○This is a product mainly dedicated to sea mud.
Applicable target soil	<ul style="list-style-type: none"> Excess mud water generated by propulsion & shield tunneling Dredged rivers Sedimentary soil from ponds Mud and soil generated at water purification plant Earth and sand caused by disasters Polluted sludge generated by various kinds of construction 	<ul style="list-style-type: none"> Dredged soil from harbors Mud included sea at various kind of construction 	

Cautions and notes on use

- When using this product, please wear a dust-protective mask and protective gloves and spray improvement target soil with this product.
- Before using this product, please conduct a pre-blending test with use of soil sampled at a site and comprehend a proper amount of this product to be added to the soil.
- In order to evenly blend this product, it is recommended to carry out blending in a steel tank or pit.
- Even though MT-2 and MT-3 can improve mud to be in a plastic state at a low additive amount, they are more effective if sufficient blending is applied.
However, when there is a large amount of soil to be improved or when blending is difficult, it is recommended to improve the soil by using attachments to a backhoe such as a drive mixing.
- Since some water in mud may be drained when cement or lime is added to MT-1 treated soil, please check the matter by conducting a pre-blending test before using this product.
- Please store this product indoors or cover it with blue sheet or the like so as not to be exposed to sunlight or rain water.
- A sample of this product will be offered free of charge, so please contact us or a distributor.
- Since we have a soil quality testing laboratory, we would like to conduct a blending test free of charge if you send some original soil.

CON Co., Ltd

Room 201 Renai Kawasaki, 18-8 Ogawacho, Kawasaki-ku, Kawasaki-shi, Kanagawa 210-0023 JAPAN
 TEL & FAX : +81-44-223-8872
 Mail : info@come-on-nippon.co.jp
 Web : https://come-on-nippon.co.jp

MORI Institute Environmental Technology Inc,



NETIS Registration number
 TH-160012-A

**High water-content
 mud modifiers**

**MT
 series**



Instantly solidifying and carrying away mud generated at site.

Speed × Low cost

MT series are mud modifiers which enable high water-content mud generated at a construction site to be solidified in a short time, and to be carried away instantly by a dump truck.



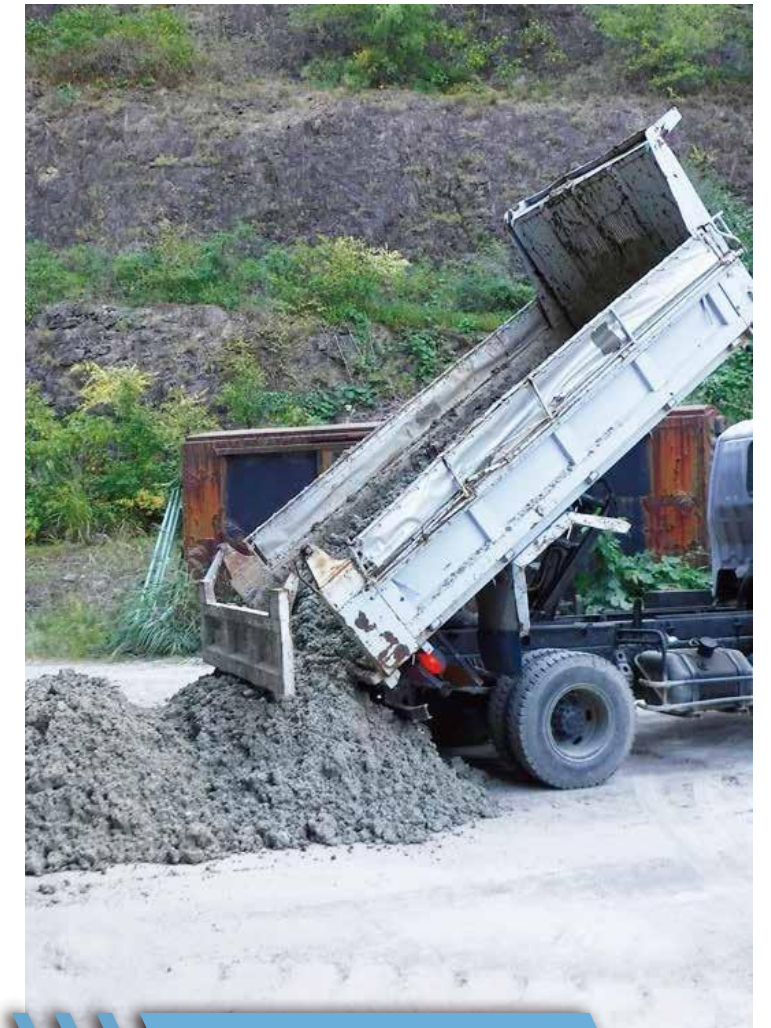
High water mud generating...



Add MT modifier and mix



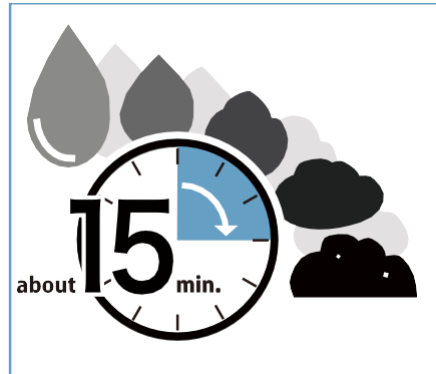
Loading on dump truck



Instantly carrying away



Product features



Mud will be solidified around 15 minutes after adding this product for modification.



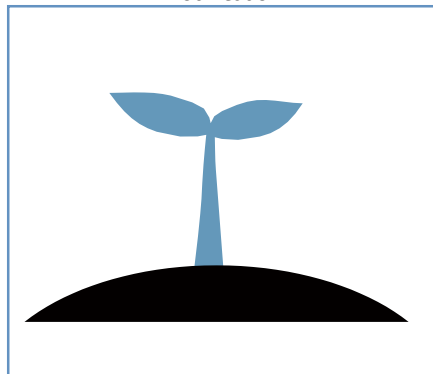
Work can load mud on a dump truck and carrying it away instantly after its modification.



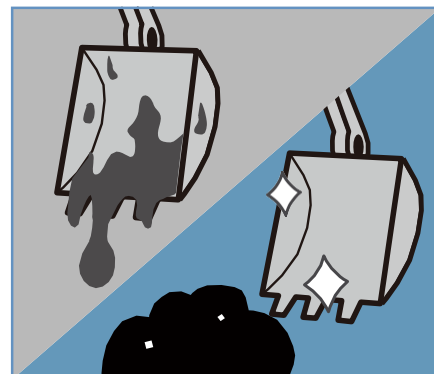
Work can be done with only use of a backhoe and a pit.



This product is entirely neutral in pH.



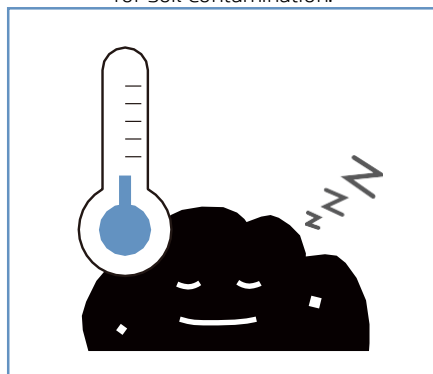
This is a safe product satisfying the Environmental Quality Standards for Soil Contamination.



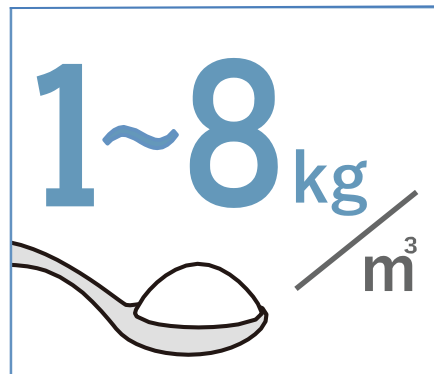
The amount of soil sticking to the backhoe can be reduced because of MT treatment.



Waste generated after using this product can be reduced significantly MT series has packed in polyethylene materials.



MT treatment, unlike lime treatment, does not generate heat.



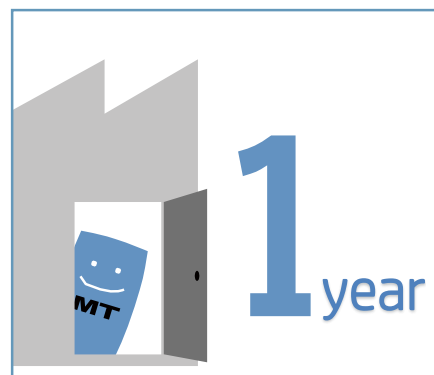
Mud can be modified by adding a smaller amount of this product, compared with cement or lime.



MT-2 and MT-3 can be used even at a windy site because they are applied by dust-control treatment.



This product is applicable to all kinds of mud including polluted sludge generated by ground improvement and dredged soil.



This product, if kept indoors, can be safely used for about 1 year.

Applicable target soil



Excess mud water generated by propulsion and shield tunneling



Dredged soil from rivers and harbors



Polluted sludge generated by ground improvement



Sedimentary soil from ponds



Earth and sand caused by disasters



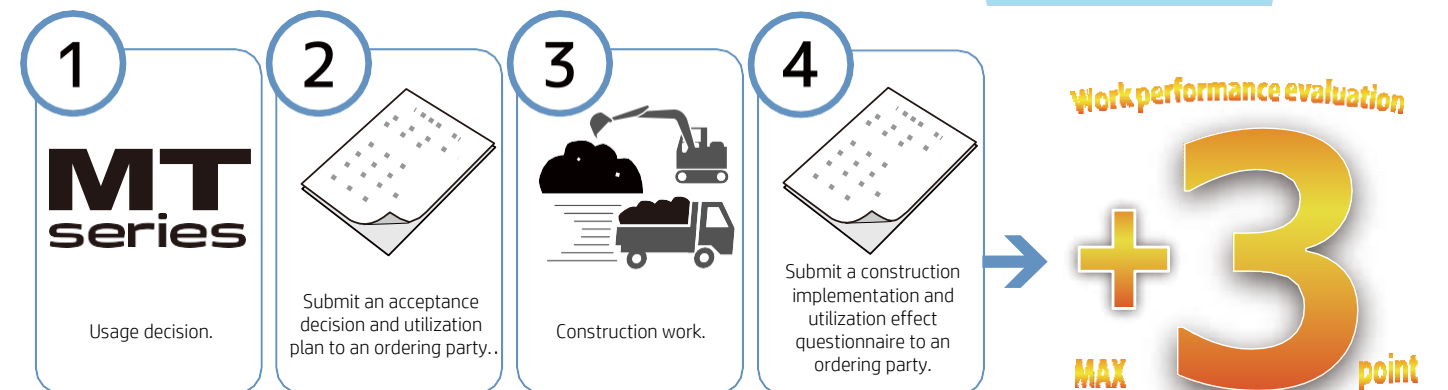
Polluted sludge generated by various kinds of construction

NETIS registered technology Advantages for use

This product is recognized as a NETIS registered technology. Since this product, by being used for works ordered by the Ministry of Land, Infrastructure, Transport and Tourism of JAPAN, is subject to additional points (up to 3 points) at the time of work performance evaluation, please make use of this product.



Registration number
TH-160012-A



※Even work ordered by an individual local government may be subject to additional point at the time of work performance evaluation. For details, please contact a relevant department of an individual local government.

Use Case ① Mud-thickening system propulsion work



Use Case ③ Foundation pile construction work



Use Case ② Reservoir dredging work



Use Case ④ Harbor dredging work

